

Christmas Around
THE *World*
AND *Holidays of Light*



YOUR HOLIDAY DESTINATION

Holiday History

Christmas Around the World began in 1942 as a United Nations Day salute to the Allies during World War II. That first year, a single tree was newly decorated each day for 12 days to honor the countries fighting alongside America. A tradition was born. Families and organizations from Chicago's cultural communities were invited to MSI to decorate individual trees representing their cultural holiday traditions. *Holidays of Light* joined the annual festivities in 1994, providing a multicultural display of holidays celebrating light and enlightenment.



Country Listing

44	ASSYRIA	29	ITALY
40	AUSTRALIA	14	JAPAN
2	AUSTRIA	55	KENYA
34	BELARUS	41	KOREA
13	BELGIUM	27	LATVIA
17	BELIZE	23	LEBANON
42	BOLIVIA	35	LITHUANIA
28	BOSNIA + HERZEGOVINA	9	LUXEMBOURG
56	BULGARIA	33	MEXICO
16	CANADA	46	NATIVE AMERICA
1	CHICAGO SKY	10	NORWAY
7	CHINA	21	PHILIPPINES
47	COLOMBIA	11	POLAND
39	CROATIA	19	PUERTO RICO
18	CZECH REPUBLIC	4	ROMANIA
36	DENMARK	48	RUSSIA
45	ECUADOR	8	SCOTLAND
15	EGYPT	49	SLOVAKIA
43	ENGLAND	50	SLOVENIA
5	ESTONIA	26	SOCIALWORKS
38	FINLAND	3	SWEDEN
24	FRANCE	53	SWITZERLAND
32	GERMANY	12	THAILAND
51	GREECE	20	UKRAINE
30	GUATEMALA	25	UNITED STATES
22	HUNGARY	6	WALES
52	ICELAND		
31	IRELAND		

HOLIDAYS OF LIGHT

DIWALI

HANUKKAH

KWANZAA

LUNAR NEW YEAR

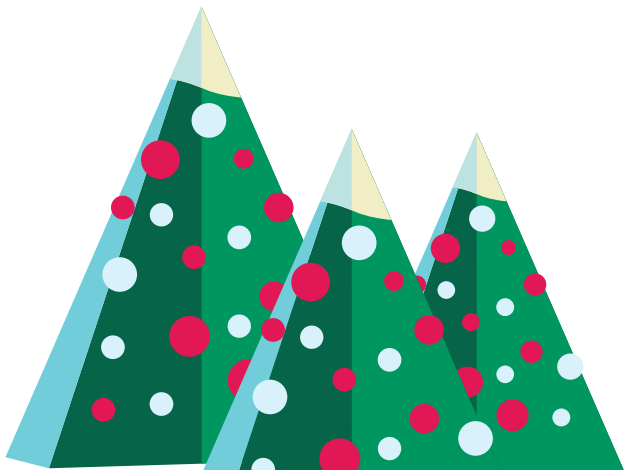
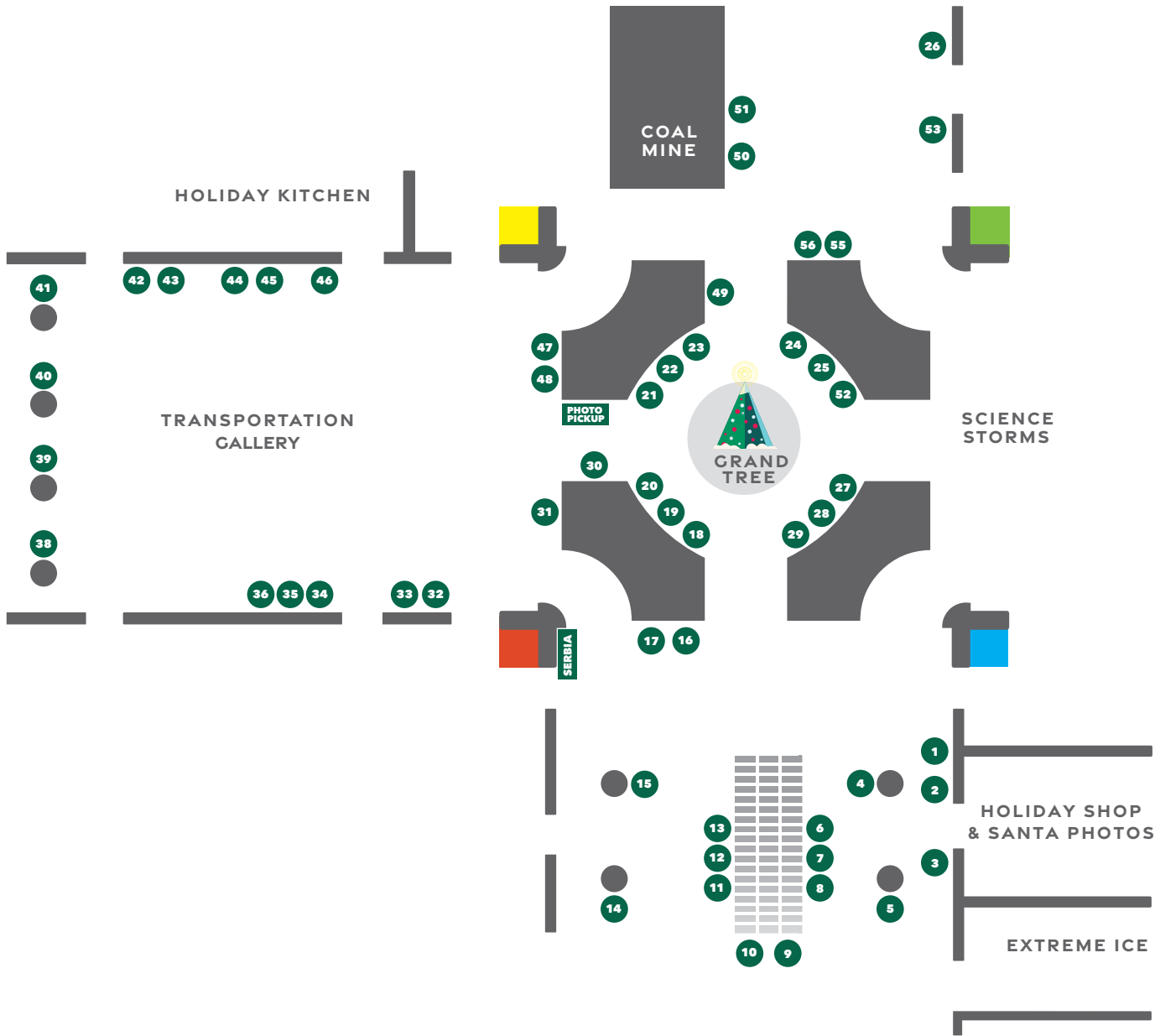
RAMADAN

ST. LUCIA

VISAKHA PUJA

WINTER SOLSTICE

Tree Map



Give The Gift of Science

HOLIDAY SHOP

Stock up on holiday ornaments in our Holiday Shop. You'll find festive decorations representing cultural traditions from around the world.

Whether you're looking for a special holiday gift or something unique to add to your collection, this is a must-see destination during your visit. Museum members receive 10 percent off all purchases.

A MEMBERSHIP KEEPS ON GIVING!

Membership to the Museum of Science and Industry makes a great gift for all the science and culture lovers in your life. Find the level that's right for your recipient, purchase and send digital membership cards out immediately. It's never been easier to give the gift that will be enjoyed all year. msichicago.org/gift

Share what you love about this celebration using **#MSIHoliday**



Photos with Santa

At MSI, the holidays are truly the most wonderful time of year! We invite you to create memories by visiting Santa in his festive photo studio inside the Holiday Shop. The whole family can pose for a fun, physically distanced photo with the jolly man himself and bring home a souvenir photo.

This activity requires a timed-entry ticket and is not included in Museum Entry.

Capacity is limited and subject to availability.

SUN	MON	TUES	WED	THURS	FRI	SAT
			NOV 17	18	19	20
21	22	23	24	25	26	27
	CLOSED			CLOSED THANKSGIVING		
28	29	30	DEC 1	2	3	4
	CLOSED					
5	6	7	8	9	10	11
	CLOSED					
12	13	14	15	16	17	18
	CLOSED					
19	20	21	22	23	24	25
						CLOSED CHRISTMAS DAY
26	27	28	29	30	31	JAN 1
2	3					

 SANTA @ MSI

SANTA SCHEDULE

Thursday, November 18 – Sunday, November 21
 Friday, November 24 – Sunday, November 28
 Wednesday, December 1 – Sunday, December 5
 Wednesday, December 8 – Sunday, December 12
 Wednesday, December 15 – Thursday, December 23

SANTA TICKETS

\$40 per group or family
 (MSI members receive \$5 off)
 Purchase timed-entry tickets in
 the Entry Hall or Santa's studio.

MSI HOLIDAY HOURS

Extended hour days, when the **Museum closes at 5:30 p.m.**, are noted above in white.