

MSI has a gift idea for everyone on your list this holiday season. Check out the options below for all the science fans, history buffs, fun-lovers, creative geniuses, mini-Einsteins and proud nerds in your life.



HOLIDAY GIFTS GALORE

Stop by the Holiday Shop (Main Level) and Museum Store (Entry Hall) to explore the unique ornaments, gifts, stocking stuffers and curiosities for your loved ones. MSI members receive 10 percent off purchases.



GIVE *the* GIFT of MEMBERSHIP

THE GIFT THAT KEEPS ON GIVING

You don't have to try finding a gift bag large enough to hold a tornado, a 727, a submarine and dozens of baby chicks. Give the gift of membership instead! It offers a year of amazing experiences to the lucky recipient(s). Learn more: msichicago.org/giftmembership

GATHER ROUND

CHRISTMAS
AROUND *the*
WORLD
and HOLIDAYS
of LIGHT



2017 EXHIBIT GUIDE



IT WASN'T ABOUT SCIENCE. OR INDUSTRY.
IT WAS ALL ABOUT PEOPLE. ALL PEOPLE.
and AFTER 75 YEARS, IT'S BECOME
A FAMILY TRADITION.

Since 1942, the *Christmas Around the World* and *Holidays of Light* exhibits have allowed generations of guests to connect with the excitement of the holiday season and to their own heritage.

It all began when the Museum displayed one single tree as a tribute to the American Allies during World War II. Over the years, this symbol grew into a tradition that includes more than 50 trees and displays that allow our guests to learn how faiths and cultures from all corners of the globe celebrate the holiday season.

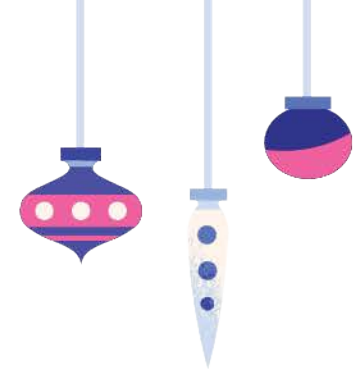
Whether you've visited each year or it's your first time here, I want to thank you for making the Museum part of your holiday tradition.

Warm regards,

A handwritten signature in dark blue ink that reads "David R. Mosena".

David R. Mosena
President and CEO
Museum of Science and Industry, Chicago

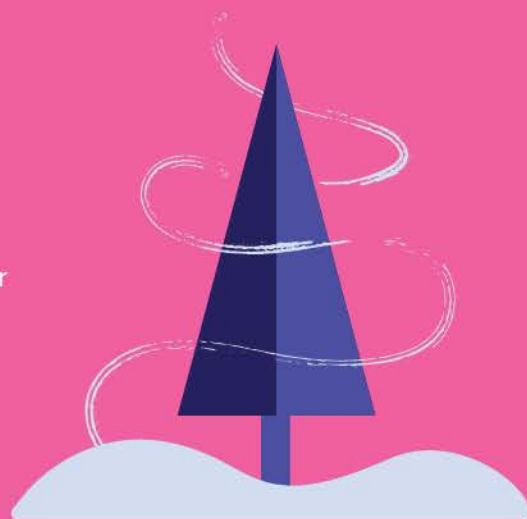
CREATING HOLIDAY MEMORIES SINCE 1942



2015

The Museum of Science and Industry created *Christmas Around the World* in 1942 to honor Chicago's ethnic communities whose native countries were allied with the United States during World War II. The tribute consisted of one strong symbol: **A SINGLE TREE.** It was decorated with handmade ornaments each evening by a different ethnic group for display the following morning. A tradition was born out of this beloved celebration of cultures, and ethnic groups were invited back to decorate their own individual tree to represent traditions in their native lands. Performances were also added, treating guests to the songs, dances and festivities

of different cultures. In 1994, the Museum's holiday festivities expanded further to include *Holidays of Light*. In partnership with strong community organizations, this multicultural display continues to detail and highlight holidays that celebrate light and enlightenment nearly 25 years later.



1950s



1960s-1970s



1950s



1950s



1950s



1959

Share photos of what you love about this celebration using **#MSIHOLIDAY.**

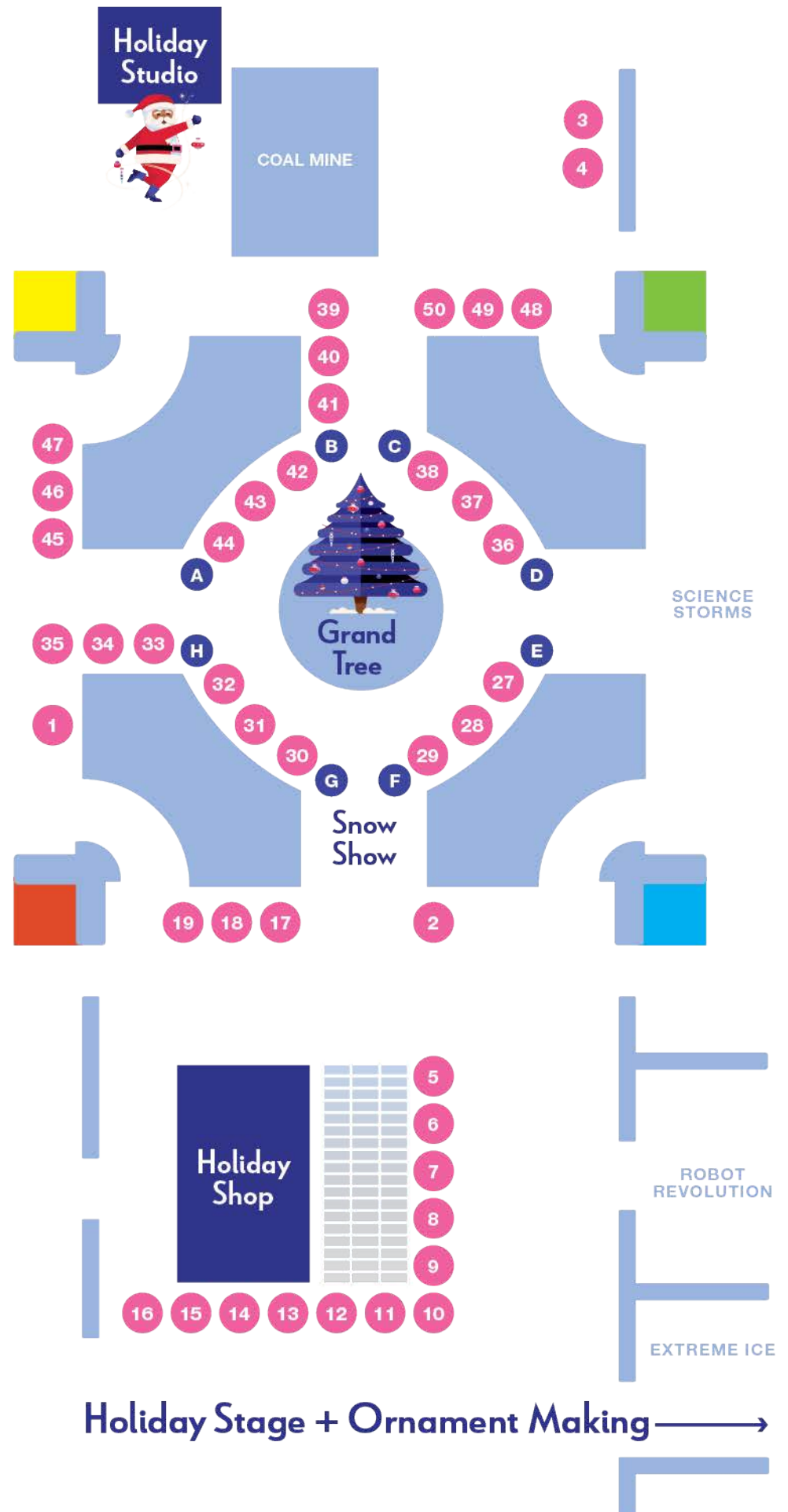
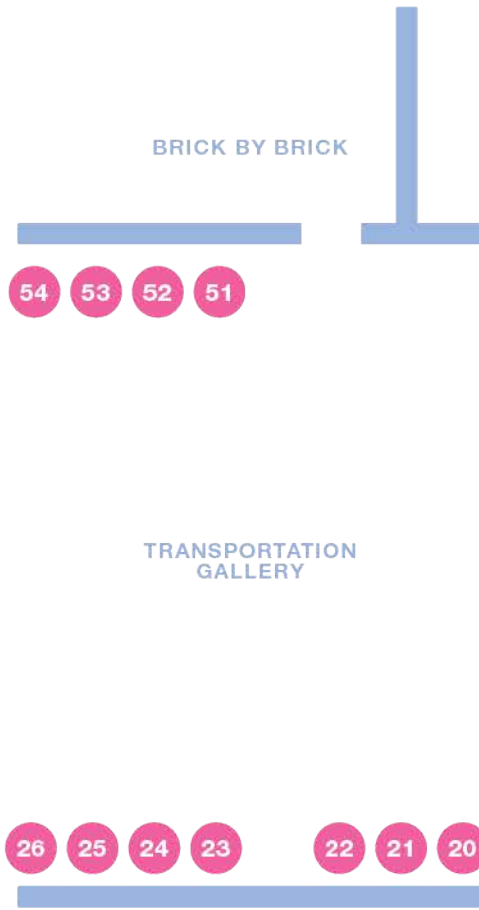
MUSEUM MAP

HOLIDAYS OF LIGHT

- A Kwanzaa
- B Hanukkah
- C Ramadan
- D Diwali
- E Chinese New Year
- F Visakha Puja
- G Winter Solstice
- H St. Lucia

CHRISTMAS TREES

- 1. Armenia
- 42. Assyria
- 5. Australia
- 27. Austria
- 38. Belarus
- 18. Belgium
- 29. Belize
- 45. Bolivia
- 6. Bosnia & Herzegovina
- 19. Canada
- 40. China
- 23. Colombia
- 20. Croatia
- 48. Czech Republic
- 15. Denmark
- 24. Ecuador
- 31. Egypt
- 3. England
- 50. Estonia
- 11. Finland
- 7. France
- 13. Germany
- 37. Greece
- 16. Guatemala
- 10. Hungary
- 28. Iceland
- 12. India
- 4. Ireland
- 44. Italy
- 17. Japan
- 49. Korea
- 9. Latvia
- 14. Lebanon
- 25. Lithuania
- 54. Luxembourg
- 41. Mexico
- 21. Native America
- 51. Netherlands
- 35. Nigeria
- 26. Norway
- 39. Philippines
- 30. Poland
- 43. Puerto Rico
- 2. Romania
- 46. Russia
- 22. Scotland
- 34. Slovakia
- 32. Slovenia
- 53. Sweden
- 47. Switzerland
- 36. Thailand
- 52. Ukraine
- 33. USA
- 8. Wales



Holiday Stage + Ornament Making →

PERFORMANCE CALENDAR

All cultural performances are held on the Holiday Stage in the Auditorium. Photos with Santa will take place in the Holiday Studio near *Yesterday's Main Street*. (Note that Santa takes a break from noon to 12:30 p.m. each day he is at MSI.) Holiday ornament making will take place in the West Pavilion near the Auditorium. Schedule is subject to change. Please check the Information Desk for an up-to-date schedule. (Museum open until 4 p.m. on dates not listed below.)

SATURDAY, NOVEMBER 18

Museum open until 5:30 p.m.

Photos with Santa **HOLIDAY STUDIO**
10 a.m. to 3:40 p.m.

Holiday Ornament Making **WEST PAVILION**
10:30 a.m. to 4 p.m.

Cultural Performances **AUDITORIUM**

- 11 a.m. Philippine American Cultural Foundation and SamaSama Project
- 12:15 p.m. Choom-Sa-Rang and Little OL Korea
- 1:30 p.m. Jasmin Jahal Dance Company (Egypt, Turkey, Lebanon)
- 2:45 p.m. Springbrook Orchestra and Chorus (general holiday)
- 4 p.m. Pachacamak Folk (Ecuador)

SUNDAY, NOVEMBER 19

Museum open until 5:30 p.m.

Photos with Santa **HOLIDAY STUDIO**
10 a.m. to 3:40 p.m.

Holiday Ornament Making **WEST PAVILION**
10:30 a.m. to 4 p.m.

Cultural Performances **AUDITORIUM**

- 11 a.m. Whispers Center for Artistic Expression (Poland)
- 12:15 p.m. Chicago Donauschwaben Kindergruppe (Germany)
- 1:30 p.m. Mali Koscieliscanie (Poland)
- 2:45 p.m. Indian Catholic Association of America (India)

THURSDAY, NOVEMBER 23

The Museum is closed for Thanksgiving



FRIDAY, NOVEMBER 24

Museum open until 5:30 p.m.

Photos with Santa **HOLIDAY STUDIO**
10 a.m. to 3:40 p.m.

Holiday Ornament Making **WEST PAVILION**
10:30 a.m. to 4 p.m.

Cultural Performances **AUDITORIUM**

- 11 a.m. Punch and Judaism (Hanukkah)
- 12:15 p.m. Taki Sumak (Ecuador)
- 1:30 p.m. Mamma Sunshine (Kwanzaa)
- 2:45 p.m. Mamma Sunshine (Kwanzaa)
- 4 p.m. Holy Nativity (Romania)

SATURDAY, NOVEMBER 25

Museum open until 5:30 p.m.

Photos with Santa **HOLIDAY STUDIO**
10 a.m. to 3:40 p.m.

Holiday Ornament Making **WEST PAVILION**
10:30 a.m. to 4 p.m.

Cultural Performances **AUDITORIUM**

- 11 a.m. Nordikids (Sweden)
- 12:15 p.m. Moravian Cultural Society (Czech Republic)
- 1:30 p.m. Srbadija Folklore Ensemble (Serbia),
- 2:45 p.m. Ballet Folklorico Fiesta Mexicana
- 4 p.m. Belizean Cultural Bearers Inc.

SUNDAY, NOVEMBER 26

Museum open until 5:30 p.m.

Photos with Santa **HOLIDAY STUDIO**
10 a.m. to 3:40 p.m.

Holiday Ornament Making **WEST PAVILION**
10:30 a.m. to 4 p.m.

Cultural Performances **AUDITORIUM**

- 11 a.m. Tsukasa Taiko Drummers (Japan)
- 12:15 p.m. Alma Ecuatoria (Ecuador)
- 1:30 p.m. On Pointe Performing Arts Center (Mexico)
- 2:45 p.m. Chicago Cuatro Orchestra (Puerto Rico)
- 4 p.m. Serbian Orthodox Midwest Diocese

THURSDAY, NOVEMBER 30

Museum open until 4 p.m.

Photos with Santa **HOLIDAY STUDIO**
10 a.m. to 3:40 p.m.

FRIDAY, DECEMBER 1

Museum open until 4 p.m.

Photos with Santa **HOLIDAY STUDIO**
10 a.m. to 3:40 p.m.

SATURDAY, DECEMBER 2

Museum open until 5:30 p.m.

Photos with Santa **HOLIDAY STUDIO**
10 a.m. to 3:40 p.m.

Holiday Ornament Making **WEST PAVILION**
10:30 a.m. to 4 p.m.

Cultural Performances **AUDITORIUM**

- 11 a.m. Thistle and Highland Dancers (Scotland)
- 12:15 p.m. Norwegian National League of Chicago
- 1:30 p.m. Tambura and Dance Group "Croatian Vines" and Croatian School
- 2:45 p.m. Mangalorean Konkan Christian Association (India)
- 4 p.m. Aloha Center of Chicago (South Pacific Islands)

SUNDAY, DECEMBER 3

Museum open until 5:30 p.m.

Photos with Santa **HOLIDAY STUDIO**
10 a.m. to 3:40 p.m.

Holiday Ornament Making **WEST PAVILION**
10:30 a.m. to 4 p.m.

Cultural Performances **AUDITORIUM**

- 11 a.m. Bonnie Lindholm School of Dance (USA)
- 12:15 p.m. Austrian Mixed Chorus
- 1:30 p.m. UNWLA Iskra Dance (Ukraine)
- 2:45 p.m. Filipino American Historical Society of Chicago (Philippines)
- 4 p.m. Greek Orthodox Metropolis of Chicago

THURSDAY, DECEMBER 7

Museum open until 4 p.m.

Photos with Santa **HOLIDAY STUDIO**
10 a.m. to 3:40 p.m.

FRIDAY, DECEMBER 8

Museum open until 4 p.m.

Photos with Santa **HOLIDAY STUDIO**
10 a.m. to 3:40 p.m.

SATURDAY, DECEMBER 9

Museum open until 5:30 p.m.

Photos with Santa **HOLIDAY STUDIO**
10 a.m. to 3:40 p.m.

Holiday Ornament Making **WEST PAVILION**
10:30 a.m. to 4 p.m.

Cultural Performances **AUDITORIUM**

- 11 a.m. Donya Dance Ensemble (Middle Eastern/ World Dance)
- 12:15 p.m. Croatian School Cardinal Stepinac
- 1:30 p.m. After School Matters (Bolivia)
- 2:45 p.m. Internacional Tuwamari (Ecuador)
- 4 p.m. Colindatorii (Romania)



SCHEDULE CONTINUES →

SUNDAY, DECEMBER 10

Museum open until 5:30 p.m.

Photos with Santa **HOLIDAY STUDIO**
10 a.m. to 3:40 p.m.

Holiday Ornament Making **WEST PAVILION**
10:30 a.m. to 4 p.m.

Cultural Performances **AUDITORIUM**

- 11 a.m. McNulty Irish Dancers
- 12:15 p.m. Knights of Lithuania Dancers and Suktnis
- 1:30 p.m. IHM Children's Choir and Marimba Ensemble (Mexico, Central America)
- 2:45 p.m. Flamenco Chicago Dance Studio (Spain)
- 4 p.m. Orpheus Hellenic Folklore Society (Greece)

THURSDAY, DECEMBER 14

Museum open until 4 p.m.

Photos with Santa **HOLIDAY STUDIO**
10 a.m. to 3:40 p.m.

FRIDAY, DECEMBER 15

Museum open until 4 p.m.

Photos with Santa **HOLIDAY STUDIO**
10 a.m. to 3:40 p.m.

SATURDAY, DECEMBER 16

Museum open until 5:30 p.m.

Photos with Santa **HOLIDAY STUDIO**
10 a.m. to 3:40 p.m.

Holiday Ornament Making **WEST PAVILION**
10:30 a.m. to 4 p.m.

Cultural Performances **AUDITORIUM**

- 11 a.m. Finnladies of Chicagoland (Finland)
- 12:15 p.m. Welsh Cambrian Benevolent Society presents the Red Dragon Welsh Dancers and Old Fezziwig's Band (Wales)
- 1:30 p.m. Colombian American Cultural Center
- 2:45 p.m. RSCDS Chicago Branch Demo Team (Scotland)
- 4 p.m. Borozda Hungarian Folk Dance Group

SUNDAY, DECEMBER 17

Museum open until 5:30 p.m.

Photos with Santa **HOLIDAY STUDIO**
10 a.m. to 3:40 p.m.

Holiday Ornament Making **WEST PAVILION**
10:30 a.m. to 4 p.m.

Cultural Performances **AUDITORIUM**

- 11 a.m. Tierra Colombiana Dance Ensemble
- 12:15 p.m. Campanella Children's Choir (Russia)
- 1:30 p.m. Polish Scouting Organization of Illinois
- 2:45 p.m. Ensemble Alioni (Republic of Georgia)
- 4 p.m. St. Mark Coptic Orthodox Church (Egypt)

THURSDAY, DECEMBER 21

Museum open until 5:30 p.m.

Photos with Santa **HOLIDAY STUDIO**
10 a.m. to 3:40 p.m.

FRIDAY, DECEMBER 22

Museum open until 5:30 p.m.

Photos with Santa **HOLIDAY STUDIO**
10 a.m. to 3:40 p.m.

SATURDAY, DECEMBER 23

Museum open until 5:30 p.m.

Photos with Santa **HOLIDAY STUDIO**
10 a.m. to 3:40 p.m.

SUNDAY, DECEMBER 24

Museum is open until 4 p.m.

MONDAY, DECEMBER 25

The Museum is closed for Christmas Day

TUESDAY, DECEMBER 26– SATURDAY, DECEMBER 30

Museum is open until 5:30 p.m.

SUNDAY, DECEMBER 31

Museum is open until 4 p.m.

MONDAY, JANUARY 1

Museum is open from 11 a.m. to 4 p.m.

TUESDAY, JANUARY 2– FRIDAY, JANUARY 5

Museum is open until 5:30 p.m.

