

what's happening



contacts:

Beth Boston
beth.boston@msichicago.org
(773) 947-6003

Marilyn Stein
marilyn.stein@msichicago.org
(773) 947-3133

please note:

Images and press releases are available at msichicago.org/press.

hours and pricing

HOURS OF OPERATION

The Museum is open every day from 9:30 a.m. to 4 p.m. Extended hours are offered during spring break and peak holiday times; check msichicago.org for details. The Museum is closed on Nov. 22 (Thanksgiving day) and Dec. 25 (Christmas day).

GENERAL ADMISSION PRICING

\$15 for adults, \$14 for seniors, \$10 for children 3-11. City of Chicago residents receive a discount as follows: \$13 for adults, \$12 for seniors, \$9 for children 3-11.

Omnimax® films; the U-505 optional, on-board tour; the *Coal Mine*; and certain special exhibitions are not included in general admission; check msichicago.org for show times and pricing.

The Museum is part of the Chicago CityPASS program, in which guests can receive admission to five of the city's most famous attractions for one low price. Buy CityPASS at the Museum or online at citypass.com.

ILLINOIS FREE DAYS

The Museum offers 52 free days for Illinois residents each year. General admission is free for Illinois residents in 2012: Jan. 12-13, 16-20, 23-27, 30-31; Feb. 1, 8, 15, 22, 29 (all Wednesdays in February); March 5; April 19; May 23; June 4-8, 11; Sept. 4-7, 10-14, 17-21, 24-28; Oct. 1-3; Nov. 5; and Dec. 3.

PARKING

Parking in the Museum's underground garage is \$20.

featured exhibits and events

BLACK CREATIVITY



POWERFUL: AFRICAN AMERICANS IN ENERGY

Jan. 25 – April 15, 2012

Included in general admission.

This year's Black Creativity exhibit, *Powerful: African-Americans in Energy*, lets you explore sources of energy in a fun, hands-on way, find out how they work, and discover the impact they have on our lives and environment. To engage all ages, the exhibit will feature a unique, "energy landscape" miniature golf experience. In nine holes, learn about energy sources as you "putt" your way through different forms of energy: oil, natural gas, wind, solar, hydroelectric and nuclear power, just to name a few. The final hole ends with an opportunity to "putt the vote" and choose your energy future. Since 1971, the Museum's annual Black Creativity program presents different exhibits and programs that recognize African-American achievements in various fields and expose children to various areas of science and technology.

JURIED ART EXHIBIT AND RELATED EVENTS

Included in general admission.

Don't miss the accompanying Black Creativity juried art exhibition, running from Jan. 25 to Feb. 29, 2012—featuring more than 100 original pieces of art from African-American artists from around the country—including painting, photography, sculpture and mixed-media pieces. Visit the Museum during one of the Black Creativity Family Days, Jan. 16, Feb. 18 and April 14, to participate in hands-on activities and live science experiences that focus on energy and how it impacts our lives.

Visit msichicago.org for more information on additional Black Creativity events and programs.

featured exhibits and events (continued)



MYTHBUSTERS: THE EXPLOSIVE EXHIBITION

March 15 – Sept. 3, 2012

Requires an additional, timed-entry ticket. Tickets on sale at msichicago.org.

Discovery Channel's Emmy®-nominated show *MythBusters* specializes in subjecting wild ideas to some wildly entertaining experiments. Adam Savage and Jamie Hyneman bring their expertise in special effects—along with co-hosts, Tory Belleci, Grant Imahara and Kari Byron—to relentlessly bust or confirm myths through the scientific method. Think you'd need to know the show to get into the action? That's your first myth to bust. Just like the series, *MythBusters: The Explosive Exhibition* will show you how to uncover the truth behind some of science's popular myths. Can you blow a brick house down? Will running in the rain keep you drier? Think you can hang off a ledge like an action hero? DON'T TRY THESE AT HOME! Test these theories and more at MSI—the only place that lets you become a real MythBuster! In addition to hands-on experiments, you can explore props and gadgets from the show—and watch live demonstrations by our myth-busting facilitators.

© 2011 Discovery Communications, LLC. MYTHBUSTERS™ and the MYTHBUSTERS logo are trademarks of Discovery Communications, LLC, used under license. All rights reserved.

General admission to the Museum with the addition of a MythBusters ticket is \$25 for adults, \$24 for seniors and \$18 for children 3-11. City of Chicago residents receive a discount. MythBusters: The Explosive Exhibition was created by Discovery Communications and Exhibits Development Group (EDG), in partnership with the Museum of Science and Industry, Chicago (MSI), Geoffrey M. Curley + Associates (GMC+A) and Beyond Entertainment Limited.

FARMERS, WARRIORS, BUILDERS: THE HIDDEN LIFE OF ANTS

Feb. 2 – July 8, 2012

Included in general admission.

Small yet abundant, with complex and wildly diverse lifestyles, ants are everywhere—living lives mostly hidden from our view. What if we could see into their world and at their level? With the aid of a macro lens and the insights of ant expert and photographer Dr. Mark Moffett, the Smithsonian Institution Traveling Exhibition Service (SITES) and the Smithsonian's National Museum of Natural History present the fascinating world of ants through large-scale photographs, a three-dimensional aluminum cast of an ant nest and giant ant models. Explore the model of a leaf cutter worker ant that has been enlarged to 50 times its actual size and learn how it uses its body to work and survive in the colony. Moffett's stunning macro photographs tell incredible stories about the lives of ants—hunting, communicating, dealing with disease and agriculture—and chronicle the work of entomologists in the field.



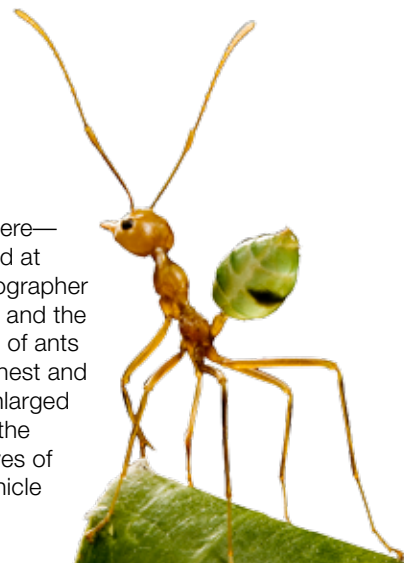
SMART HOME: GREEN + WIRED

April 19, 2012 – Jan. 6, 2013

Requires an additional, timed-entry ticket.

The Greenest Home in Chicago will re-open in 2012 with new décor and innovative ways to live green! On a 30-minute tour, explore the three-story home, which has been outfitted with an eco-friendly interior that showcases re-used and refurbished pieces that have been given a second-life, courtesy of Chicago furnishing store Scout. You'll be inspired to recycle in a whole new way when you see how older furniture and home items have been transformed for this eco-chic household. The latest in smart technology is also featured, from solar film on the roof to a state-of-the-art energy monitoring system, and with help from technology blog Gizmodo, you'll see some of the newest high-tech home gadgets on the market today. Conclude the tour with a stroll through the *Smart Park* and discover native plantings; vertical, rain and vegetable gardens; and a 40-foot wind turbine. Come see the home that has inspired more than 300,000 guests how to make eco-friendly living a part of their lives. Tour times vary; visit msichicago.org to select, purchase and print your tickets in advance.

This exhibit is not included in general admission and requires an additional, timed-entry ticket which is \$8 for adults and seniors, and \$2 for children 3-11.



new live science experiences

Discover your inner scientist with some of these new, fun activities as you learn about biology, physics, chemistry, and more! All activities are included in general admission. Schedule and performance times are subject to change; check msichicago.org for the up-to-date information.

DREAM IT, DESIGN IT, FAB IT!

Included in general admission.

Calling all inventors! Try your hand at manufacturing design and engineering as you invent and build in MSI's fabrication laboratory, otherwise known as the Fab Lab! Make your own keychain using Fab Lab computer software then watch your design be printed on acrylic plastic by a laser cutter. This workshop lasts approximately 45 minutes; check msichicago.org for up-to-date program times.

TASTE BUDDIES

Included in general admission.

Enter the Museum's Science Theater and be transported to the Candy Shoppe in this interactive play that lets you discover some sweet science while learning how taste and smell combine to make flavors. Check msichicago.org for performance times.



special lectures

NASA'S YEAR OF THE SOLAR SYSTEM: NEW WORLDS, NEW DISCOVERIES

Saturday, Jan. 21; 1 p.m.

Requires an additional \$10 ticket.

Join Dr. James L. Green, NASA's director of planetary science, for an in-depth discussion on the latest scientific discoveries as he shares the most recent developments of our solar system. A NASA mastermind since 1980, Dr. Green has developed and managed space analysis programs that allow scientists to access each other, data and important files all in one location, and written more than 150 journal articles about space and data systems. He has received the Arthur S. Flemming award for outstanding individual performance in the federal government and Japan's Kotani Prize in recognition of his international science data management activities. Come hear this super scientist first-hand and be inspired!

"ELEMENTS AND EXPERIMENTS" WITH THEODORE GRAY

Saturday, April 21; 1 p.m.

Requires an additional \$10 ticket.

Join Theodore Gray for a special discussion on science. Gray believes science isn't just in text books or bottle-upped in a lab, but all around you. As an accomplished scientist and author, Gray writes *Popular Science* magazine's "Gray Matter" column; is author to bestselling books *Mad Science*, *The Elements and Elements Vault*; and creator of the iconic, photographic periodic table poster. Gray will discuss the creation of the periodic table poster, recount stories from his lab and conduct a special, live experiment that you can do at home!

To purchase tickets for either lecture, call (773) 684-1414; space is limited.

showing in the omnimax[®] theater

Omnimax films are not included in general admission and requires an additional, timed-entry ticket: \$8 for adults, \$7 for seniors; \$6 for children (ages 3-11). Visit msichicago.org for tickets and show times.



ROCKY MOUNTAIN EXPRESS

Through May 28, 2012

All aboard! Jump on the restored Empress locomotive on a journey through the Canadian Rockies. Along your voyage, discover the heroic human drama and epic engineering involved in shaping a nearly impossible transcontinental railway link.

TORNADO ALLEY

Through May 28, 2012

Join *Storm Chasers* star Sean Casey and the researchers of VORTEX 2 on this heart-pounding science adventure. Armed with an IMAX[®] camera; a fleet of customized vehicles designed to withstand gale force winds and torrential rains; and an arsenal of the most advanced weather instruments ever created, the stars of *Tornado Alley* take you on a thrilling journey as you experience a tornado's destructive power.

ongoing exhibits and experiences

SCIENCE STORMS

Included in general admission.

Manipulate a 40-foot tornado and see the vapor whirling before you. Witness giant bolts of lightning crackling above. Trigger an avalanche using a 20-foot avalanche disk. This and much more awaits you in *Science Storms*, a new, two-story permanent exhibit that unravels the mysteries of physics and chemistry through recreations of nature's most powerful phenomena—tornados, lightning, fire, tsunamis, sunlight, avalanches and atoms in motion.

Science Storms is brought to you through the generosity of The Allstate Corporation, The Allstate Foundation, and The Grainger Foundation. Additional major funding provided by the U.S. Department of Energy.



YOU! THE EXPERIENCE

Included in general admission.

YOU! The Experience lets you explore what it means to live a vital, healthy life in the 21st century, while experimenting with nearly 50 fun, cutting-edge interactive displays. Use your own heartbeat to make the Museum's new 13-foot Giant Heart come alive. Get moving on a human-sized Hamster Wheel that provides real-time feedback on your body's responses to aerobic activity; examine real human specimens that showcase the extraordinary complexity of the body; and, much more!

YOU! The Experience is made possible through the generosity of Abbott, the Abbott Fund and the Pritzker Foundation. Additional major funding provided by J. Ira and Nicki Harris Family, Mazza Foundation, and Robert S. and Susan E. Morrison.



special private tours

THE U-505 BEHIND-THE-SCENES TOUR

This private tour of the *U-505 Submarine* takes place on select Saturday and Sunday mornings before the Museum is open to the public. The tour begins with a continental breakfast and presentation about the capture, acquisition and restoration of the *U-505*. Then, take an in-depth guided tour of the exhibit, an on-board tour of the submarine and enjoy the rest of the day at the Museum.

Tour dates in 2012: Jan. 14, Feb. 19, March 31, April 22, May 19, June 16, July 15, August 11, Sept. 16, Oct. 20, Nov. 18, and Dec. 8. Cost: Adults \$50; seniors, \$48; and children (3-11) \$40.

THE WHITE CITY ... THEN AND NOW

Go back in time to the Museum building's origins. Using the building's architecture as the guide, you'll go on a journey that spans more than 100 years, two World's Fairs and more than 400,000 square feet of exhibit space. This tour also includes a virtual simulation of the 1893 Columbian Exposition and its famed "White City."

Tour dates in 2012: Jan. 14, Feb. 19, March 31, April 22, May 19, June 16, July 15, August 11, Sept. 16, Oct. 20, Nov. 18 and Dec. 8. Cost: \$40 per person.

To purchase tickets for either tour, call (773) 684-1414 or visit msichicago.org.

social media



"Like" the Museum on Facebook and receive insider MSI knowledge, photos, updates and link up with other science-savvy Facebookers. facebook.com/msichicago.



We are also "tweeting" science facts, news and MSI happenings on Twitter. Follow us and see where it leads: twitter.com/msichicago.



Have you heard the Museum's podcasts? We've interviewed people behind exhibits like *Smart Home* and *Fast Forward* as well as special Museum guests like astronaut John Grunsfeld and Dr. Shirley Ann Jackson. We're just getting started, so be sure check them out at msichicago.org/podcast.



Check out commercials and other videos from the Museum on our YouTube channel at youtube.com/msichicago.