

2015 HOLIDAY EXHIBIT GUIDE



museum of
science+industry
chicago

IT STARTED WITH ONE TREE ...

The Museum of Science and Industry created *Christmas Around the World* in 1942 to honor Chicago's ethnic communities whose native countries were allied with the United States during World War II. The tribute consisted of one strong symbol: a single tree. It was decorated with handmade ornaments each evening by a different ethnic group for display the following morning.

Due to the popularity of this first effort, a tradition was born. Volunteers from Chicago's ethnic communities were invited back, year after year, to decorate their own individual tree according to traditions in their native lands. Performances were also added, treating guests to the songs, dances and festivities of different cultures. In 1994, the Museum's holiday festivities expanded further to include *Holidays of Light*. This multicultural display showcases holidays that feature light or enlightenment.

Today, guests enjoy more than 50 festive trees and displays. Who would have guessed that a simple celebration would grow to be such a beloved family tradition, standing the test of time for nearly 75 years!

TAG + SHARE YOUR HOLIDAY PHOTOS

When posting photos and experiences of your MSI holiday visit, please tag them with **#MSIholiday**. We'd love to see them!

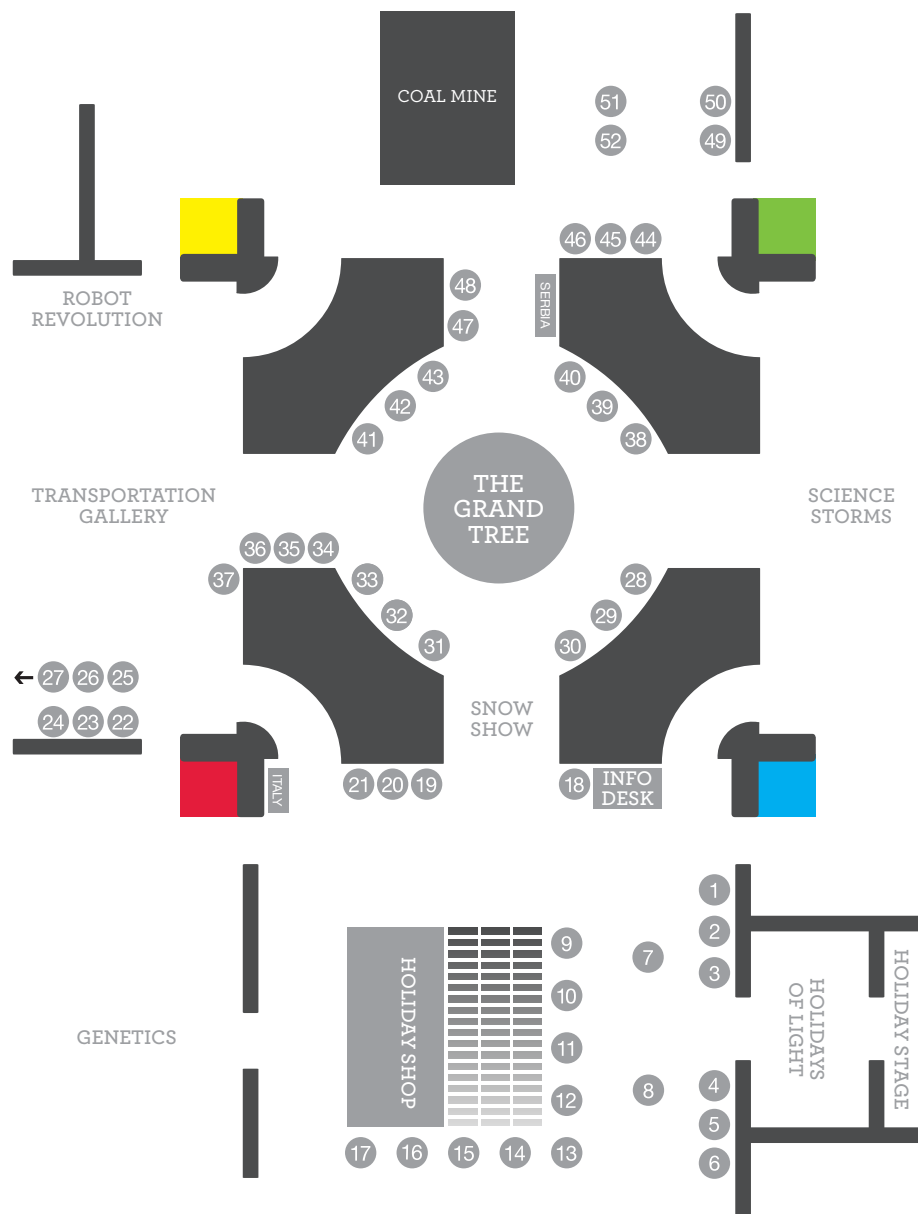


TREES AND TRADITIONS AUDIO TOUR + PODCAST

Take a more in-depth tour of the trees and traditions while you're here. Visit catw.msichicago.org and enter the two-digit number shown on a tree's plaque—or see pages 2 and 3 of this guide for a list.

Wireless internet available: **"MSI-Guest."**

You can also sample the holiday traditions of over 50 countries without leaving your chair, train or treadmill—just download the Trees and Traditions podcast: msichicago.org/trees.



ARMENIA	33	FINLAND	5	NETHERLANDS	43
AUSTRIA	7	FRANCE	37	NORWAY	40
BELARUS	35	GERMANY	25	PHILIPPINES	16
BELGIUM	21	GREECE	20	POLAND	36
BELIZE	19	GUATEMALA	26	PUERTO RICO	30
BOLIVIA	14	HUNGARY	28	ROMANIA	11
BOSNIA AND HERZEGOVINA	22	ICELAND	10	RUSSIA	9
CANADA	23	INDIA	44	SCOTLAND	41
CHINA	15	IRELAND	45	SLOVAKIA	39
COLOMBIA	51	ITALY	49	SLOVENIA	12
CROATIA	48	JAPAN	4	SWEDEN	27
CZECH REPUBLIC	42	KOREA	29	SWITZERLAND	18
DENMARK	13	LATVIA	17	THAILAND	8
ECUADOR	46	LEBANON	31	UKRAINE	38
EGYPT	24	LITHUANIA	2	UNIQLO	52
ENGLAND	34	LUXEMBOURG	47	USA	3
ESTONIA	6	MEXICO	1	WALES	32
		NATIVE AMERICA	50		

TREES & TRADITIONS AUDIO TOUR

Visit catw.msichicago.org to listen on your phone or device while viewing the exhibit (please use headphones).

HOLIDAY PHOTO OPPORTUNITIES

Share and save your holiday memories with a family photo near the iconic Grand Tree. Also, Santa will be at MSI on select week-ends—December 5-6, 12-13 and 19-20—from 10 a.m. to 3 p.m. for a jolly photo shoot with your young scientist(s)! Various photo packages are available.

CRÈCHES

Italy Serbia

HOLIDAYS OF LIGHT

Displays celebrating *Holidays of Light* are featured near the Holiday Stage.

St. Lucia Day	Chinese New Year
Hanukkah	Kwanzaa
Ramadan	Visakha Puja Day
Diwali	Winter Solstice

HOLIDAY PERFORMANCES

Enjoy various ethnic song and dance performances from groups around the Chicago area from November 21 through December 23. All activities take place on the Holiday Stage located on the Museum's Main Level. School group performances will also take place on select weekdays. Please note that the schedule is subject to change; check the schedule near the Holiday Stage for up-to-date information.

SATURDAY, NOVEMBER 21

- 10:30 a.m. Finnladies of Chicagoland (Finland)
- 11:45 a.m. Chinese American Civic Council
- 2 p.m. McNulty Irish Dancers
- 3:15 p.m. Colombian American Cultural Center
- 4:30 p.m. Ballet Folklorico Internacional Tuwamari (Ecuador)

SUNDAY, NOVEMBER 22

- 10:30 a.m. Ensemble Horo (Bulgaria)
- 11:45 a.m. Alma Ecuatoriana (Ecuador)
- 2 p.m. St. George Serbian Orthodox Church
- 3:15 p.m. Tierra Colombiana & Viva Panama
- 4:30 p.m. Malikoscieliscanie (Poland)

FRIDAY, NOVEMBER 27

- 11:45 a.m. Whispers Center for Artistic Expression (Poland)
- 2 p.m. Choomsarang Korean Dance Group
- 3:15 p.m. Tsukasa Taiko (Japan)
- 4:30 p.m. Punch & Judaism (Hanukkah)

SATURDAY, NOVEMBER 28

- 10:30 a.m. Moravian Cultural Society (Czech Republic)
- 11:45 a.m. PACF (Philippines)
- 2 p.m. Boliviamanta: After School Matters (Bolivia)
- 3:15 p.m. Mangalorean Konkan Christian Association (India)
- 4:30 p.m. Belizean Cultural Bearers, Inc.

SUNDAY, NOVEMBER 29

- 10:30 a.m. Bonnie Lindholm School of Dance (general holiday)
- 11:45 a.m. Nordikids (Sweden)
- 2 p.m. Chicago Cuatro Orchestra (Puerto Rico)
- 3:15 p.m. Flamenco Chicago (Spain)
- 4:30 p.m. Jasmin Jahal Dance Company (Middle East)

SATURDAY, DECEMBER 5

- 11:45 a.m. FADA (Philippines)
- 2 p.m. Norwegian National League of Chicago
- 3:15 p.m. Welsh Cambrian Benevolent Society
- 4:30 p.m. Kupa`a's School of the Pacific Arts (South Pacific)

SUNDAY, DECEMBER 6

- 10:30 a.m. Filipino American History Society (Philippines)
- 11:45 a.m. Cherubic Voices Choir; Iskra School of Ukrainian Dance
- 2 p.m. Knights of Lithuania Dancers and Suktinis
- 3:15 p.m. Flores de Mexico of Linda's Dance Studio
- 4:30 p.m. Greek Orthodox Metropolis of Chicago

SATURDAY, DECEMBER 12

- 10:30 a.m. Oak Forest Park District (general holiday)
- 11:45 a.m. Alioni Georgian Choir
- 2 p.m. Thistle & Heather Highland Dancers (Scotland)
- 3:15 p.m. Acapellago (general holiday)
- 4:30 p.m. Donya Dance Ensemble (Middle East)



SUNDAY, DECEMBER 13

- 10:30 a.m. Royal Scottish Country Dance Society
- 11:45 a.m. India Catholic Association
- 2 p.m. Polish Scouting Organization of Illinois
- 3:15 p.m. Austrian Mixed Chorus
- 4:30 p.m. Orpheus Hellenic Folklore Society (Greece)

SATURDAY, DECEMBER 19

- 10:30 a.m. Croatian Folk Ensemble
- 11:45 a.m. Slovenian Catholic Center
- 2 p.m. Springbrook Chorus and Brass (general holiday)
- 3:15 p.m. Orquesta de Cuatro Fenix (Puerto Rico)
- 4:30 p.m. Borozda Folk Dance & Hungarian Scouts

SUNDAY, DECEMBER 20

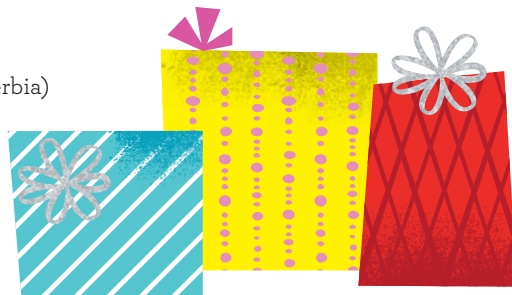
- 11:45 a.m. Campanella Children’s Choir (Russia)
- 2 p.m. Renacer Boliviano Troupe (Bolivia)
- 3:15 p.m. Saint Mark’s Coptic Church (Egypt)
- 4:30 p.m. Holy Nativity (Romania)

TUESDAY, DECEMBER 22

- 11:45 a.m. Momma Sunshine (Kwanzaa)
- 2 p.m. Holy Cross IHM Children’s Choir and Marimba Ensemble (Mexico)
- 3:15 p.m. Momma Sunshine (Kwanzaa)

WEDNESDAY, DECEMBER 23

- 3:15 p.m. Veselo Selo Orchestra (Serbia)



MSI has a gift idea for everyone on your list this holiday season. Check out the options below for all the science fans, history buffs, fun-lovers, creative geniuses, mini Einsteins and proud nerds in your life!

AN MSI MEMBERSHIP KEEPS ON GIVING

You don’t have to try to find a gift bag large enough to fit a tornado, a submarine, a 727, a ton of wonder and dozens of baby chicks. Give the gift of membership instead! It offers a year of amazing experiences to the lucky recipient(s) along with a special gift: the choice of a limited-edition ornament or an MSI-themed notecard collection. Learn more: msichicago.org/giftmembership.

GIVE A PIECE OF MSI HISTORY

Amazing and unique images from MSI’s collection of exhibits, artifacts and historical photography are available to purchase in a variety of formats. Search this online treasure trove for the perfect home or office gift: photography.msichicago.org.

HOLIDAY GIFTS GALORE

Stop by the Holiday Shop (Main Level) and Museum Store (Entry Hall) to explore the unique ornaments, gifts, stocking stuffers and curiosities for your loved ones. MSI members receive 10 percent off purchases. Enjoy free gift wrapping on select weekends (November 28–29, December 5–6, 12–13 and 19–20).





SCAVENGER HUNT

Decorations you see on the *Christmas Around the World* trees may reflect a country's love of art or sports; the animals, plants or clothing that are native to their land; food and gifts that are popular at the holidays; patriotic or religious symbols; or ornaments that are part of their tradition.

See if you can find the following, and indicate the tree where you found it!

1. A bird _____
2. A flower _____
3. A musical instrument _____
4. A piece of fruit _____
5. An item of clothing _____
6. Bread _____
7. Something made from straw _____
8. A doll _____
9. A flag _____
10. A star _____

GLOBAL GREETINGS

Match the country to its seasonal greeting!

1. France _____
 2. Greece _____
 3. Germany _____
 4. Czech Republic _____
 5. Mexico _____
 6. Poland _____
 7. Sweden _____
 8. Japan _____
- a. Fröhliche Weihnachten
 b. Wesolych Świat
 c. Joyeux Noël
 d. Merii Kurisumasu
 e. Feliz Navidad
 f. Veselé Vánoce
 g. Kala Christougenna
 h. God Jul





MUSEUM HOLIDAY HOURS

The Museum is open every day except Thanksgiving Day and Christmas Day. Standard Museum hours are 9:30 a.m. to 4 p.m. Extended hour days, when the Museum is open from 9:30 a.m. to 5:30 p.m., are noted in teal blue.

SUN	MON	TUES	WED	THURS	FRI	SAT
				NOV 19	20	21
22	23	24	25	26 CLOSED THANKSGIVING	27	28
29	30	DEC 1	2	3	4	5
6	7	8	9	10	11	12
13	14	15	16	17	18	19
20	21	22	23	24	25 CLOSED CHRISTMAS DAY	26
27	28	29	30	31	JAN 1	2
3						

Stay connected



Presented by



museum of
science+industry
chicago

